



EmArray Cyto6000 ©2007

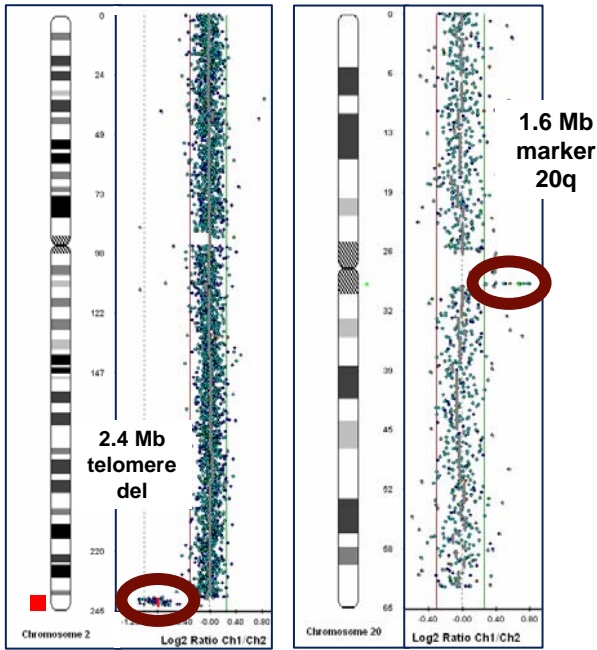


Figure 1. Replaces FISH for telomere and marker chromosome analysis – one assay provides both size and gene content.

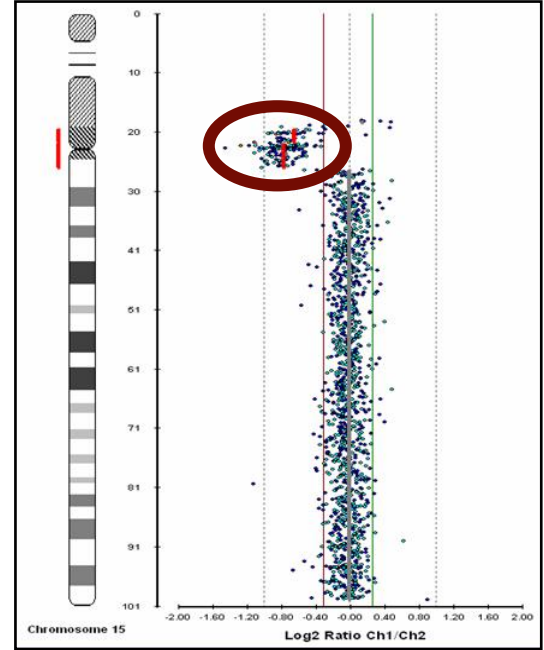


Figure 2. Example of an interstitial deletion involving the Prader-Willi/Angelman critical region.

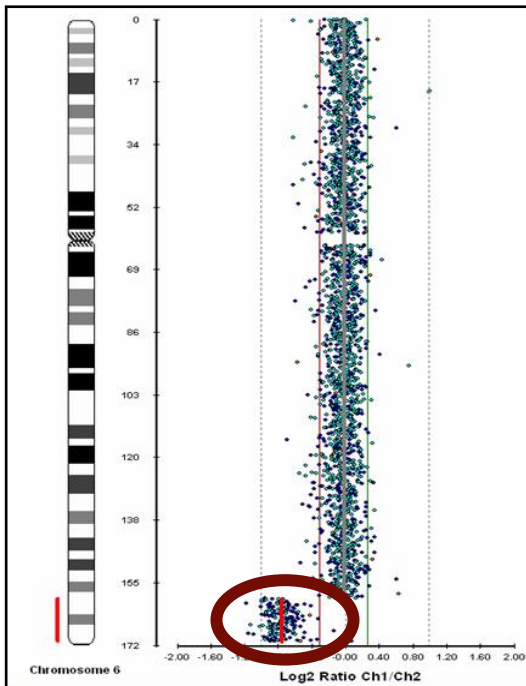


Figure 3a.

Figure 3 a & b. Detection of an unbalanced translocation between chromosomes 6q and 10q.

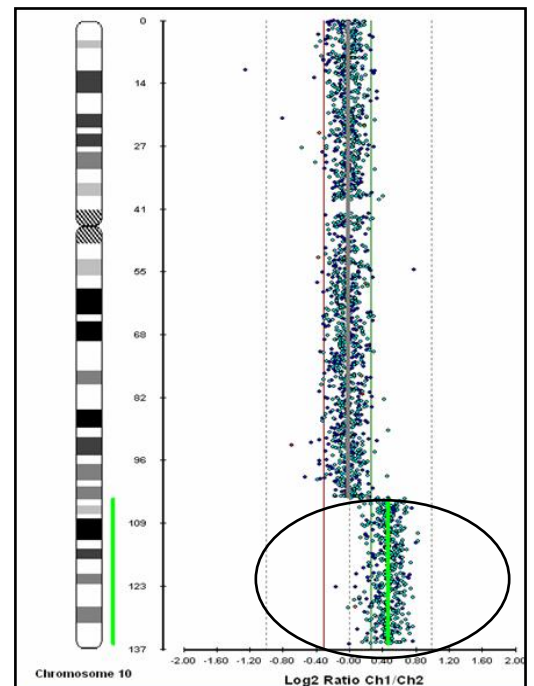


Figure 3b.